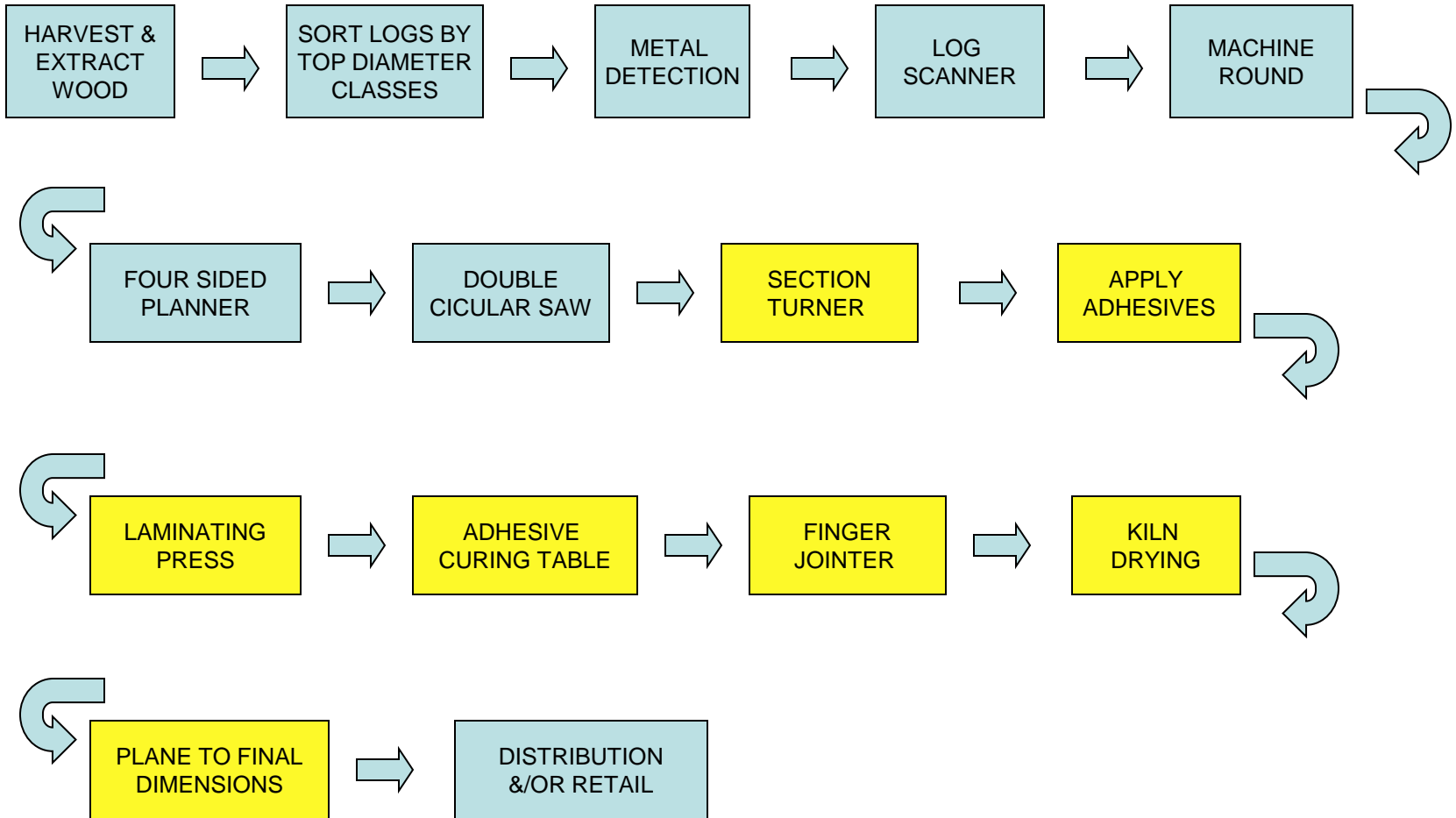


# Inside out beam

# INSIDE OUT BEAMS - HARDWOOD OR SOFTWOOD

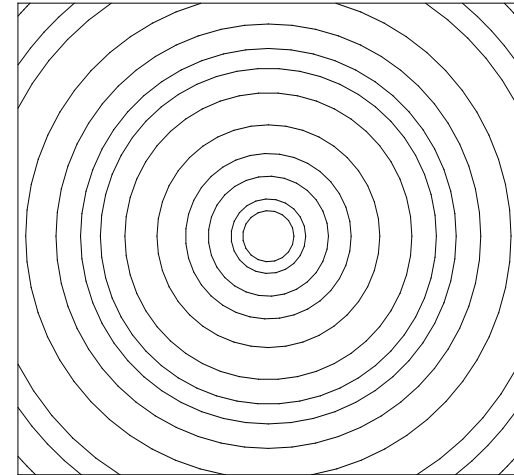
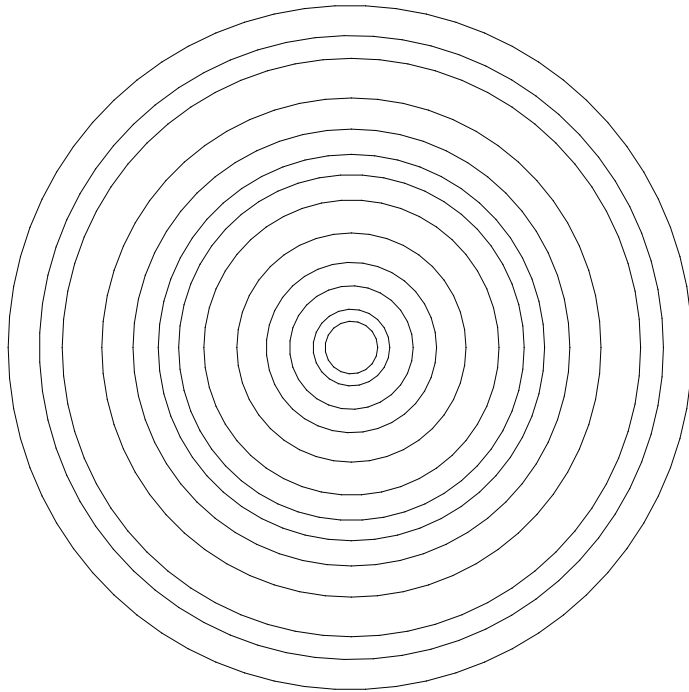


EXCLUDES CO - PRODUCTS & RESIDUES

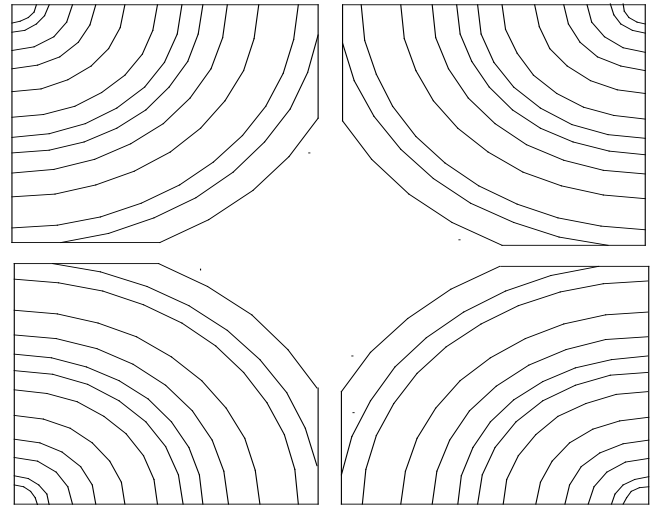
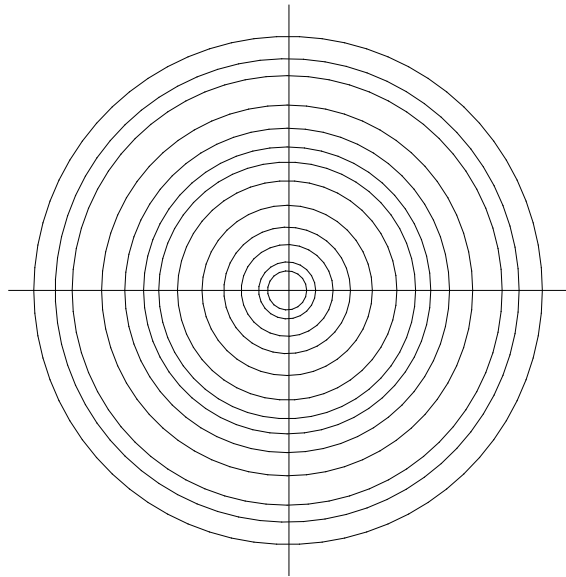
# Sweet Chestnut coppice



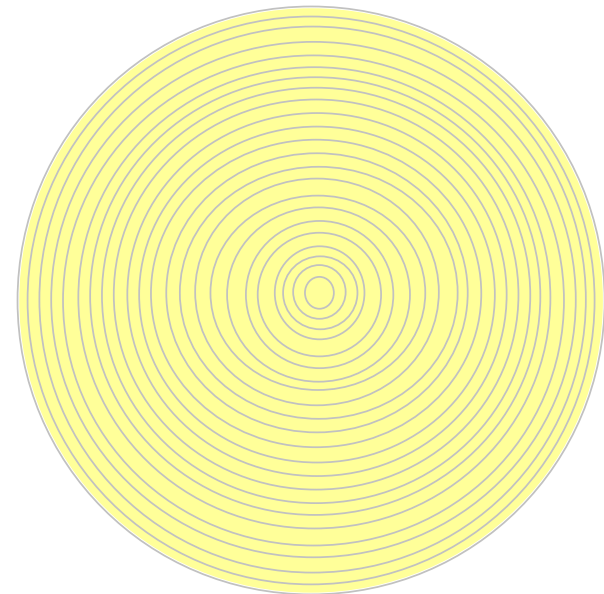
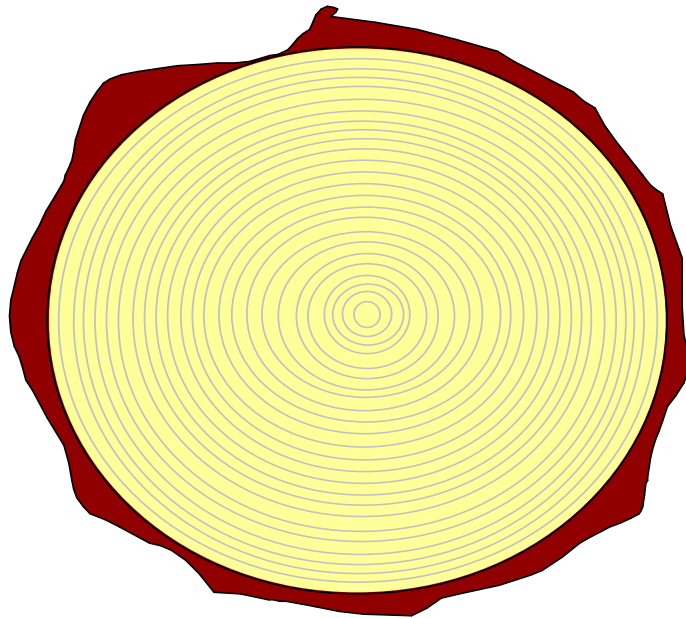
# The best way to turn a log into a beam ?



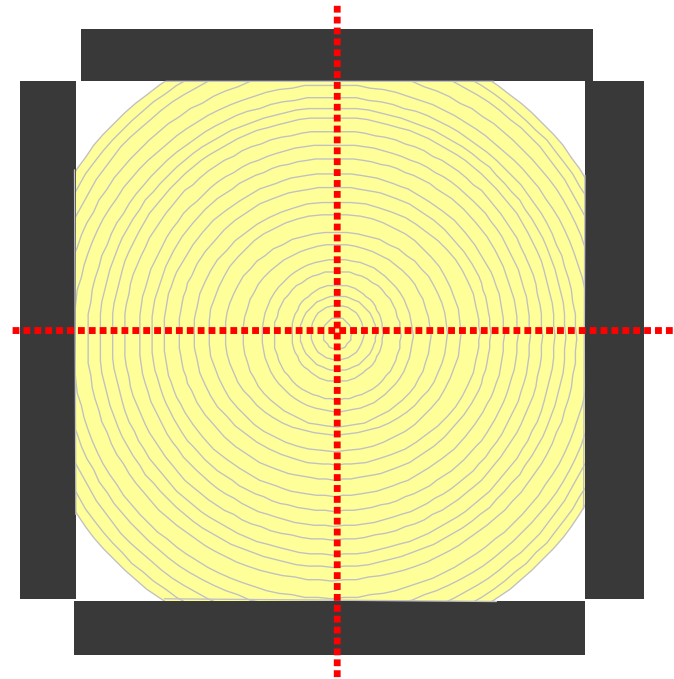
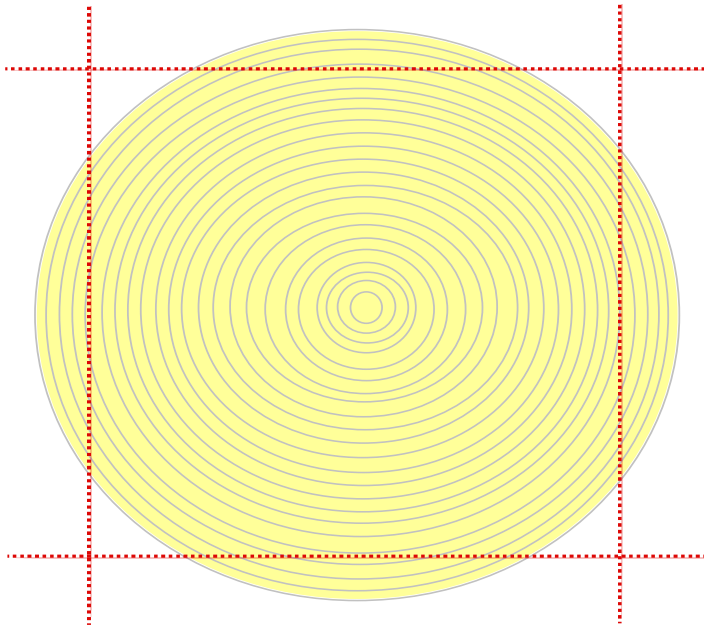
# Use a novel sawing technique & bond green



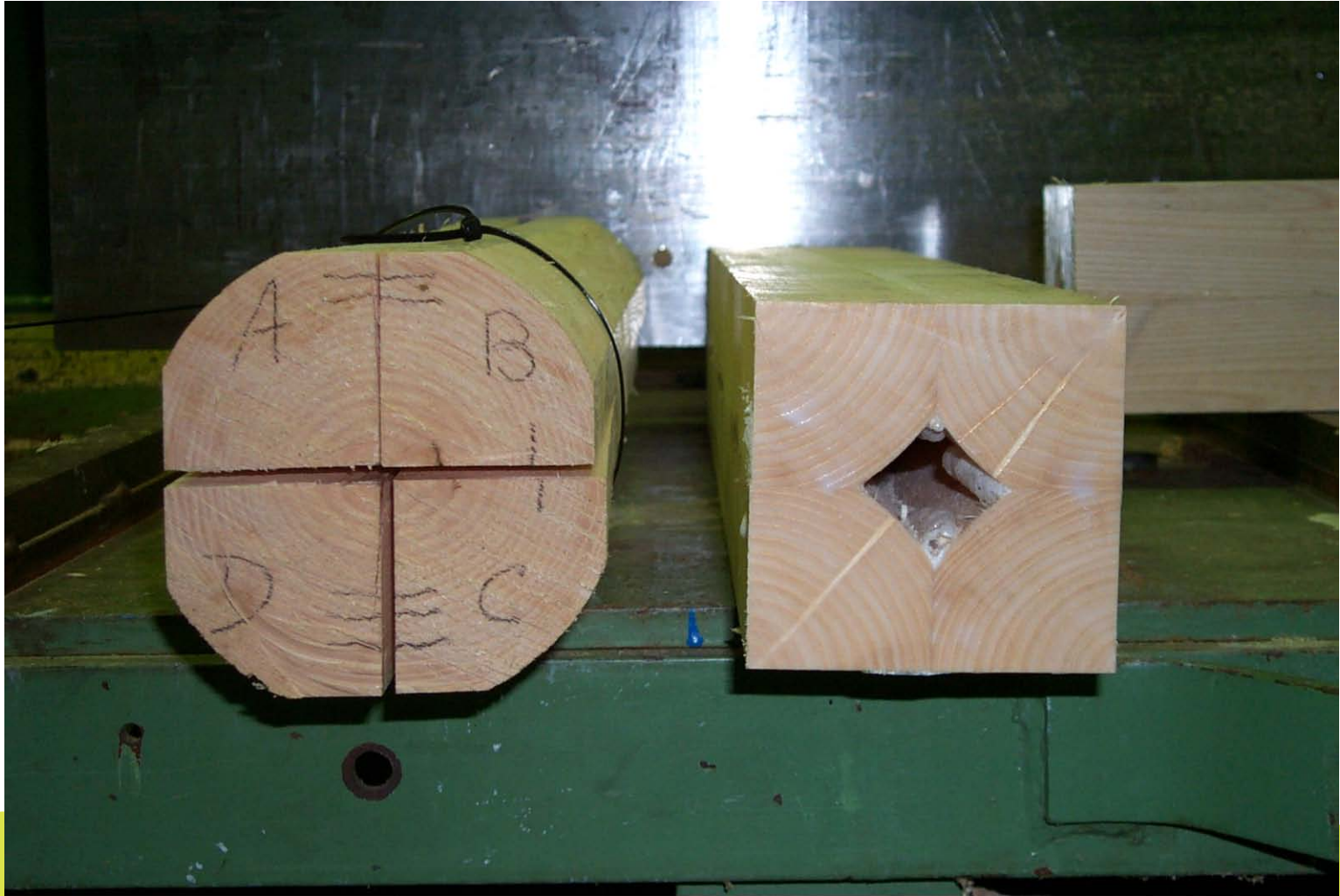
# Calculating beam dimensions



# Calculating beam dimensions



# The finished article



# Finished beams



# Inside out beams

- High level of carbon storage over normal methods of conversion
- Portal frame components, capable of containing integrated fixing system
- Stair parts (newel posts)
- Lighting columns

# Specialist equipment

- Machine rounder (£15k)
- 4 headed planer (£12k)
- Customised laminating press (In excess of £10k - manual)

# Summary: Inside out beams

	Tree	Roundwood	Process	Product
£/m <sup>3</sup>	5	35	350	500
Capital/£			40k	
People			+10	