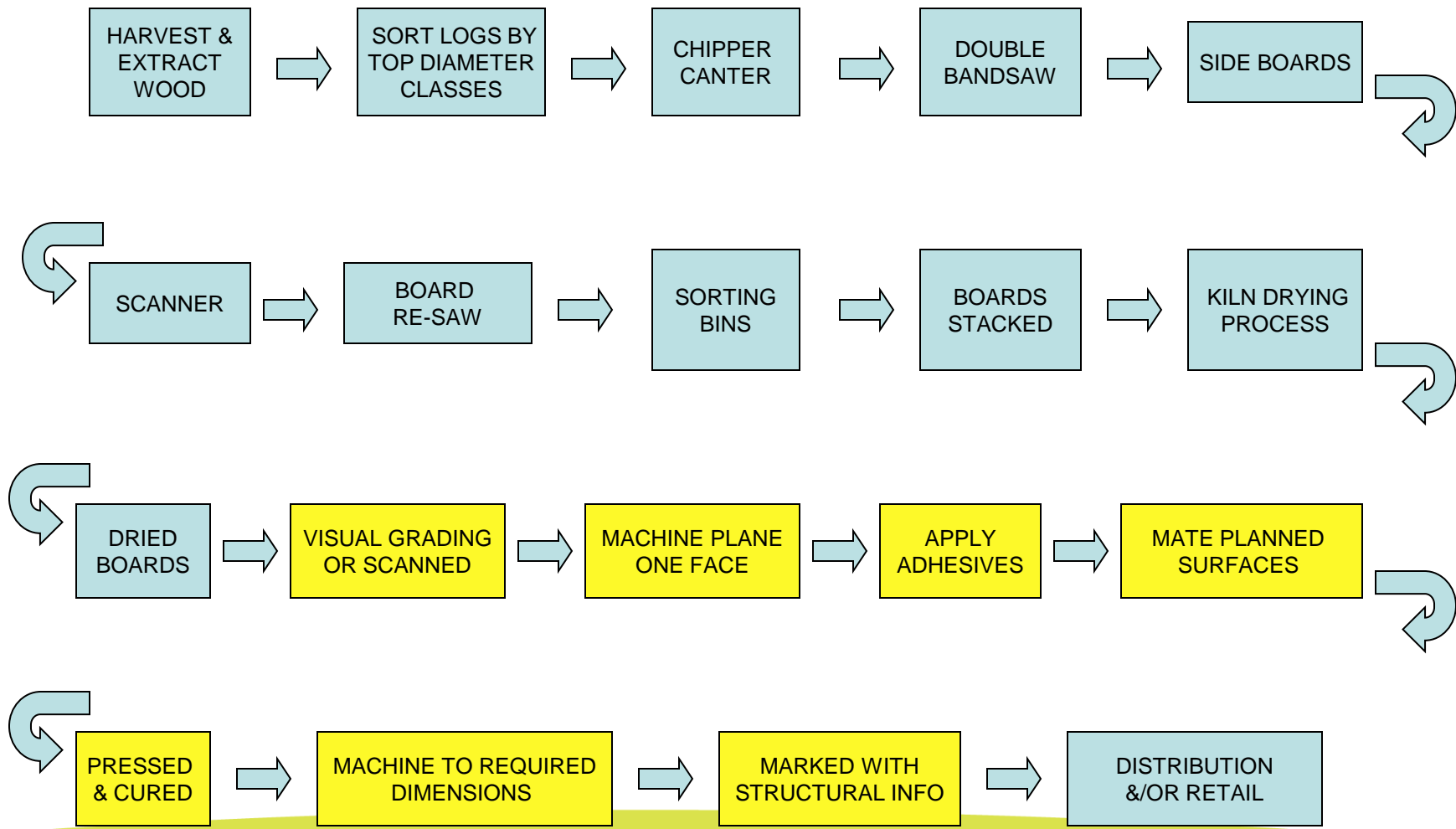


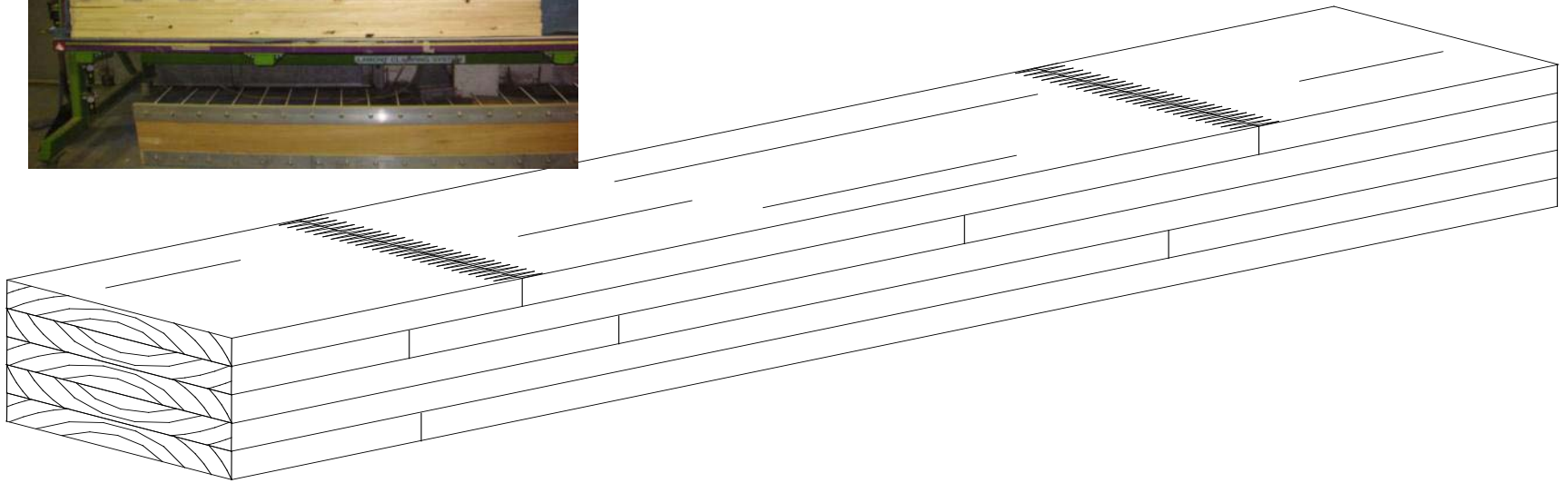
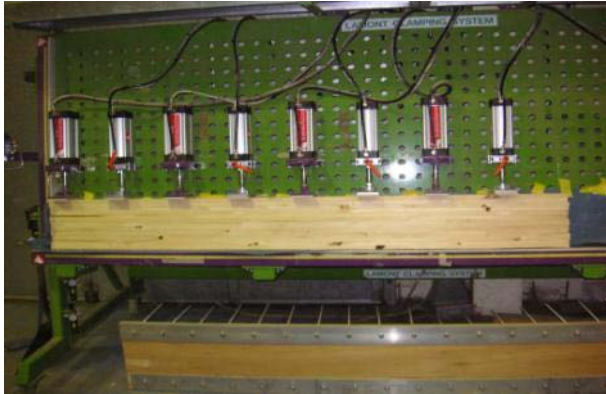
# Laminated beam

# LAMINATE BEAMS - PINE



EXCLUDES CO - PRODUCTS & RESIDUES

# Finger-joint & Face Laminate



# Laminated product examples



# Laminated product examples



# Twin laminate, glue laminated structural elements

- Improved strength and stiffness for section profile  
e.g. Twin laminate pine <C14 to C35
- Uses such as:
  - Flanges for I-beams and press metal web beams
  - Bottom chords in Attic trusses
  - Ring beams
  - Improved performance joists and rafters in refurbishment

# Specialist equipment

- Board scanning / grading (£60k)
- Economical glue spreading equipment (Glue spray - manual £2.5k)
- Laminating press (£10k - manual)

# Summary: Laminated beam

	Tree	Roundwood	Process	Product
£/m <sup>3</sup>	5	35	250	500
Capital/£			75k	
People			+10	